

Overview

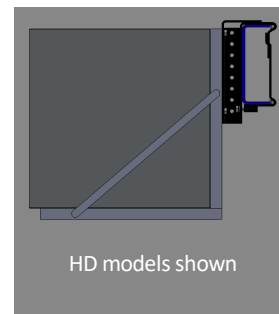
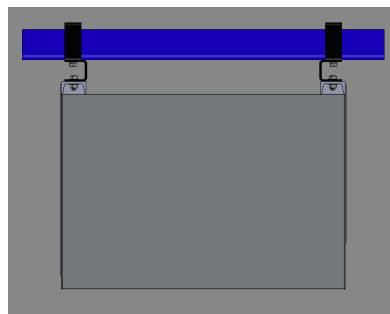
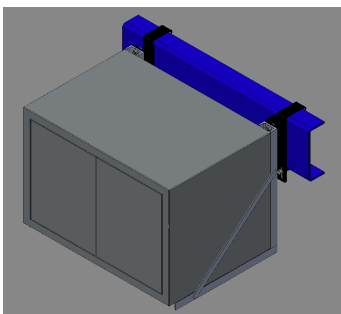
Chassis Grabbers are ideal for mounting toolboxes and equipment with mounting brackets without drilling holes in the truck frame. Chassis Grabbers allow installation using only a wrench. Installations take a fraction of the time of drilling the frame and enable easy adjustment to equipment location and position – a perfect installation every time.

Items Needed

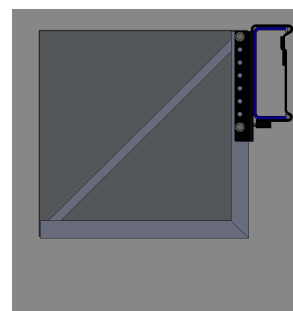
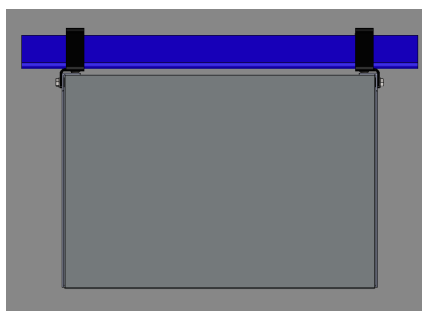
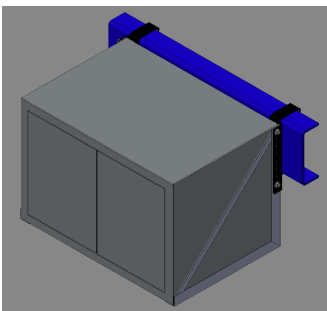
- *Toolbox Brackets* - Most toolboxes are mounted using a pair of toolbox brackets either from the toolbox manufacturer or from a third party, see examples below. Note: Toolbox brackets sold separately.



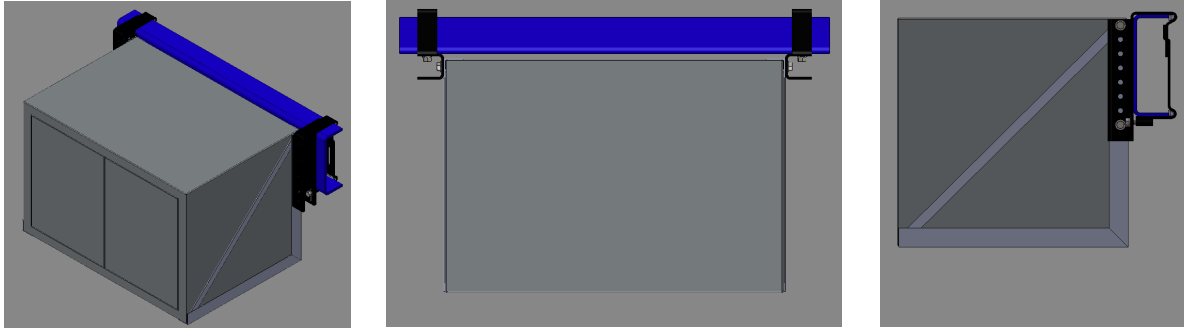
- *Chassis Grabbers* - For toolbox brackets like the pair on the left above, we recommend using a left/right pair of Universal Chassis Grabbers, either Standard Duty or Heavy Duty based upon the weight of the toolbox and its contents. These brackets are attached to the holes/slots that run parallel to the face of the truck frame, see images below.



For toolbox brackets like the example shown on the right, there are several mounting options. The preferred configuration is to use a left/right pair of UNIV PER models and mount the toolbox brackets to the holes that run perpendicular to the face of the truck frame with the Chassis Grabbers mounted to the inside of the toolbox brackets, see images below. This configuration minimizes the amount of truck frame needed.



Alternatively, our Universal Standard or Heavy Duty models can be used by mounting the Chassis Grabber brackets to holes that run perpendicular to the truck frame with the Chassis Grabber brackets mounted to the outside of the toolbox brackets, see images below.



- *Mounting Hardware* – Bolts, washers, lock washers, nuts or nylocks to secure the equipment to the Chassis Grabbers. Note: Equipment mounting hardware sold separately.

Mounting Procedure

- Measure and mark the frame where the Chassis Grabbers will be mounted to ensure that the toolbox or other equipment being mounted will fit between the mounting brackets once they are attached to the Chassis Grabber brackets.
- Mount the Chassis Grabbers to the frame referring to the Installation Instructions that came with the Chassis Grabbers. Note: Chassis Grabber Installation Instructions are also available on the downloads page on www.chassisgrabber.com.
- If the mounting brackets do not have holes, or the holes do not line up with the holes or slots in the Chassis Grabber, drill holes in the equipment brackets to match the holes in the Chassis Grabbers. Attach the equipment brackets to the Chassis Grabbers using at least two (2) bolts per side. Secure with washers, lock washers and nuts or nylocks.
- Place the toolbox or other equipment on to the brackets, mark and drill holes as needed in the equipment and the mounting brackets and secure with appropriate bolts or other mounting hardware.
- The equipment can be raised or lowered by using different holes in the Chassis Grabbers to attach the mounting brackets to the Chassis Grabbers. The equipment can be moved or removed by uninstalling the equipment, moving the Chassis Grabbers and then re-installing.

Note: While this Application Note illustrates mounting options for toolboxes, it also applies to other types of equipment that utilize similar mounting brackets including APUs, Hydraulic Coolers or other types of equipment.