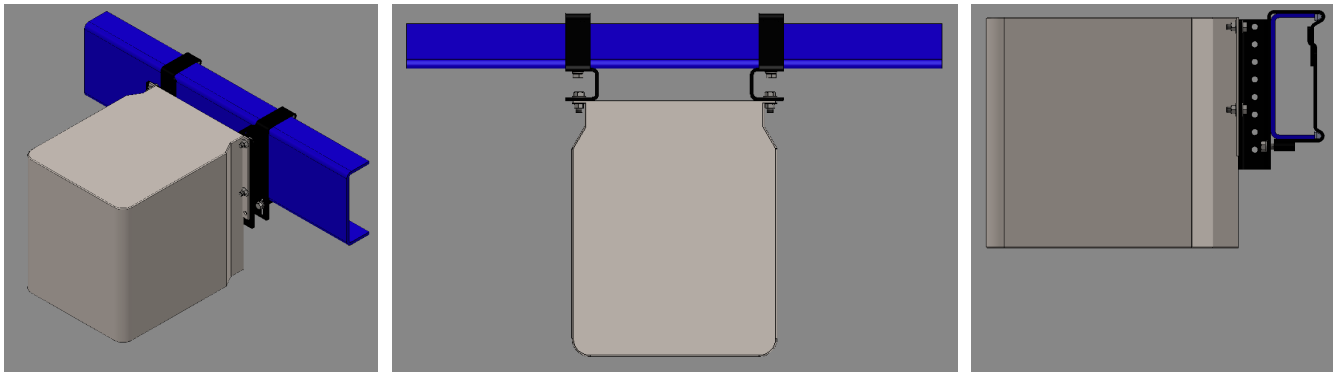


### Overview

Chassis Grabbers are ideal for mounting hydraulic coolers and other back-mounted equipment that is typically bolted directly to the truck frame, without drilling holes in the truck frame. Chassis Grabbers allow installation using only a wrench. Installations take a fraction of the time of drilling the frame and enable easy adjustment to equipment location and position – a perfect installation every time.

### Items Needed

- *Chassis Grabbers* - We recommend using a left/right pair of Universal Chassis Grabbers, either Standard Duty or Heavy Duty based upon the weight of the equipment being installed. The hydraulic cooler, or other back-mounted equipment, is attached to the holes/slots that run parallel to the face of the truck frame, see images below.

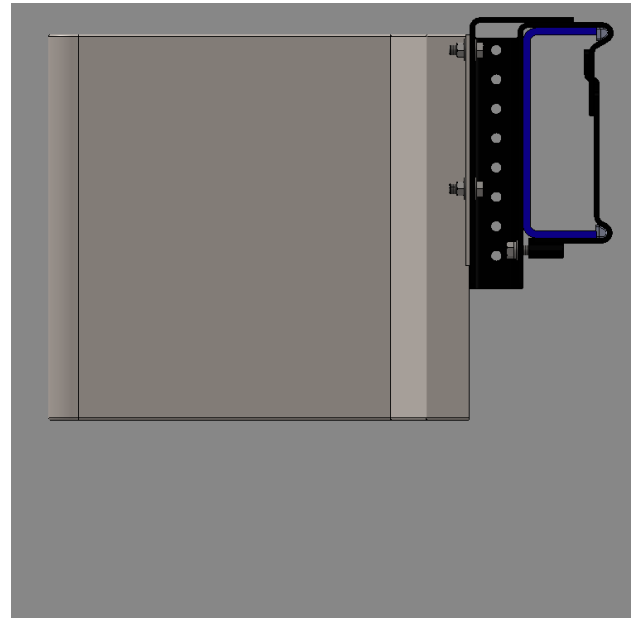
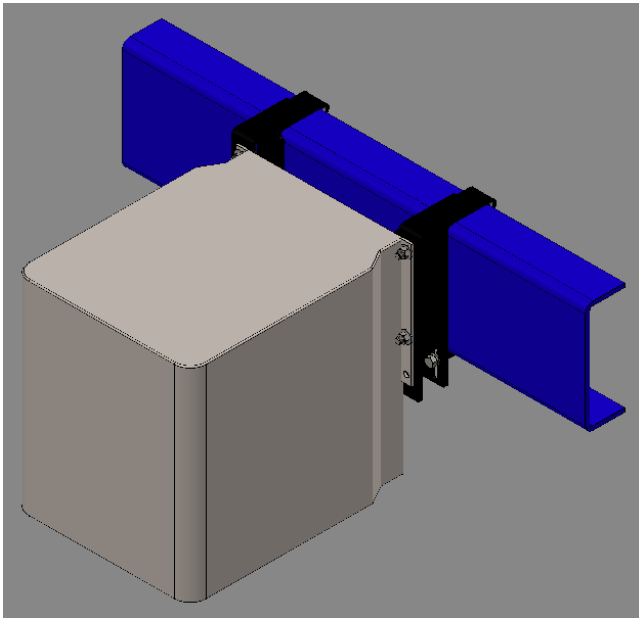


- *Mounting Hardware* – Bolts, washers, lock washers, nuts or nylocks to secure the equipment to the Chassis Grabbers. Note: Equipment mounting hardware sold separately.

### Mounting Procedure

- Measure and mark the frame where the Chassis Grabbers will be mounted to ensure that the mounting holes in the hydraulic cooler, or other equipment being mounted, will line up with the holes & slots that are parallel to the face of the truck frame.
- Mount the Chassis Grabbers to the frame referring to the Installation Instructions that came with the Chassis Grabbers. Note: Chassis Grabber Installation Instructions are also available on the downloads page on [www.chassisgrabber.com](http://www.chassisgrabber.com).
- If the equipment being mounted does not have mounting holes, or the holes do not line up with the holes or slots in the Chassis Grabber, drill holes in the appropriate surfaces of the equipment to match the holes in the Chassis Grabbers. Attach the equipment to the Chassis Grabbers using at least two (2) bolts per side. Secure with washers, lock washers and nuts or nylocks.

- The equipment can be raised or lowered by using different holes in the Chassis Grabbers to attach the equipment to the Chassis Grabbers. The equipment can be moved or removed by uninstalling the equipment, moving the Chassis Grabbers and then re-installing.
- For equipment weighing between 600 pounds and 1,000 pounds, and for all off-road applications we highly recommend the use of a pair of Heavy Duty Chassis Grabber models, see images below.



Note: While this Application Note illustrates mounting options for hydraulic coolers, it also applies to other types of equipment that are typically mounted directly to the truck frame including APUs and other types of equipment.